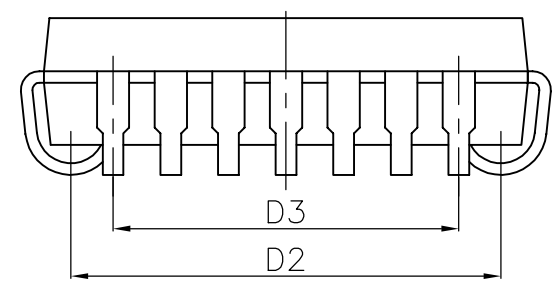
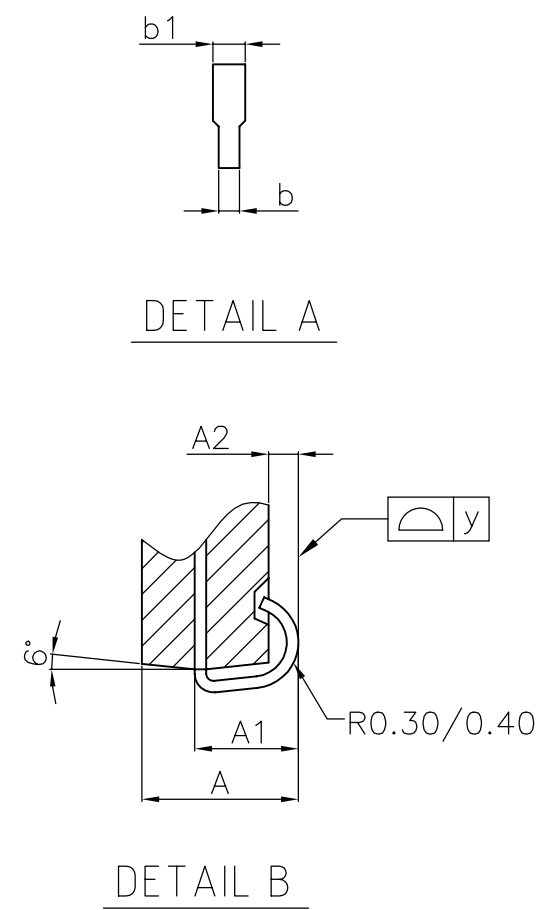
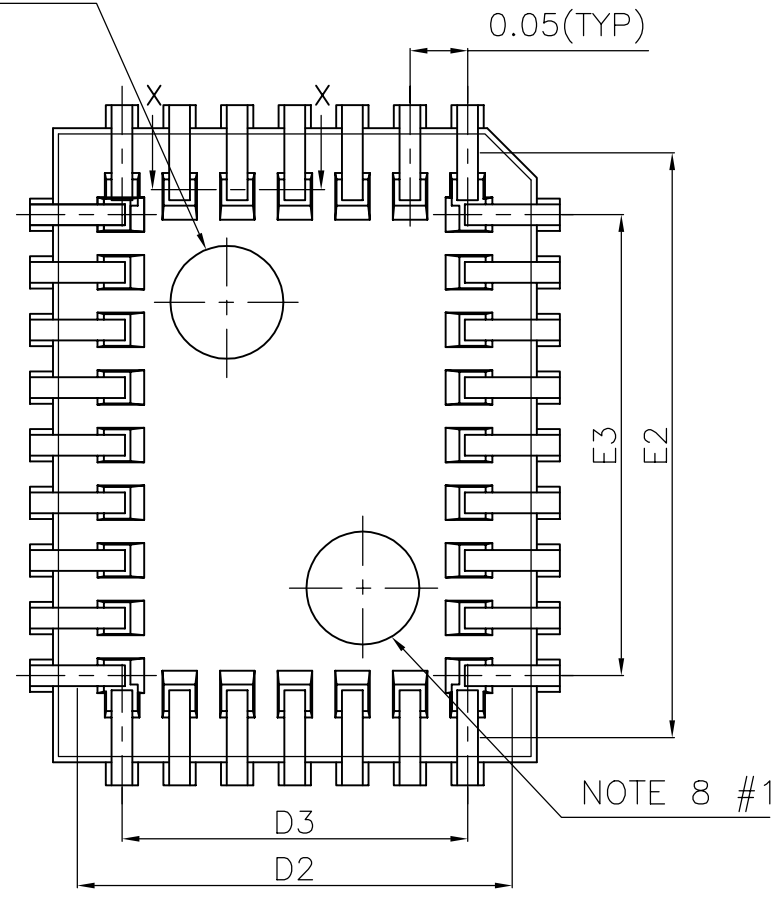
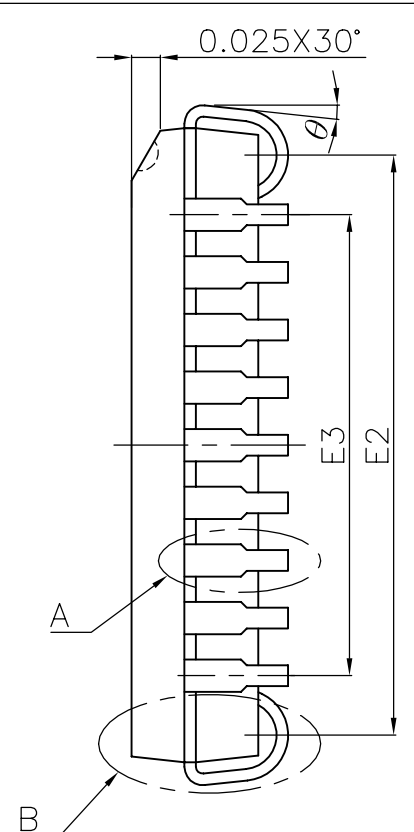
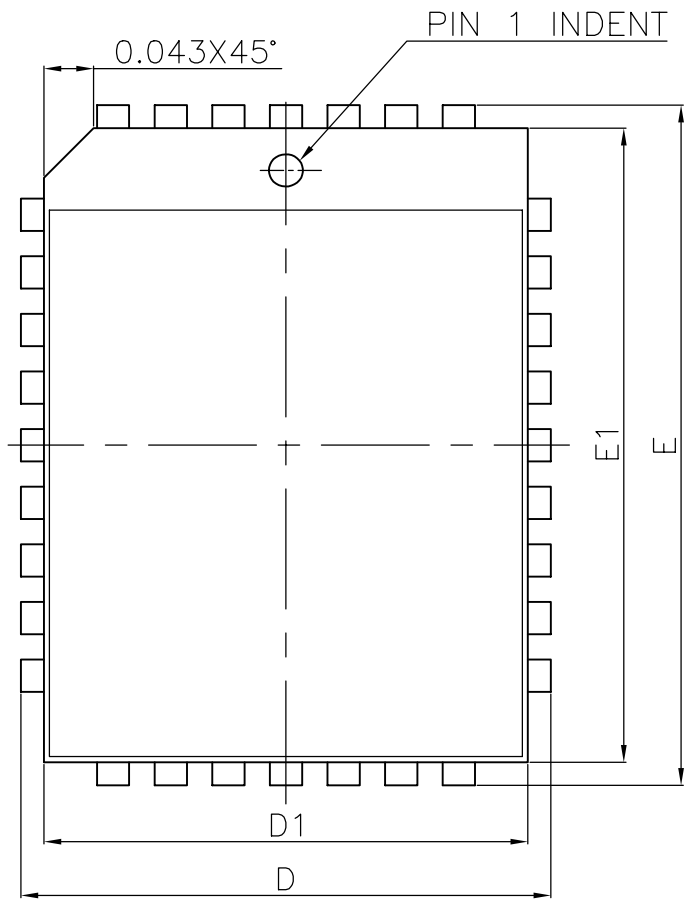
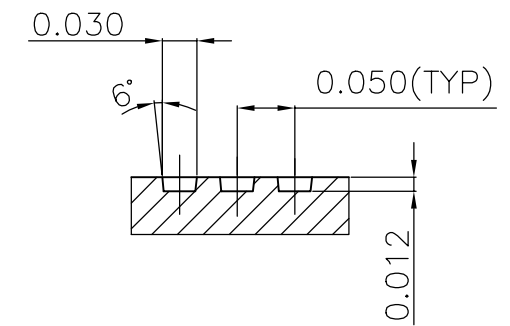


E-PIN INDENT  $\phi 0.098(2\text{PLS})$  NOTE 8 #2



NOTE :

1. CONTROLLING DIMENSION : INCH
2. LEAD FRAME MATERIAL : OLIN C151
3. DIMENSION "D1 AND E1" DOES NOT INCLUDE INTERLEAD FLASH. INTERLEAD FLASH SHALL NOT EXCEED 0.010"[0.25mm] PER SIDE.



4. DIMENSION "b1" DOES NOT INCLUDE DAMBAR PROTRUSION. ALLOWABLE DAMBAR PROTRUSION SHALL BE 0.010"[0.25mm] TOTAL IN EXCESS OF THE "b1" DIMENSION AT MAXIMUM MATERIAL CONDITION. DAMBAR CANNOT BE LOCATED ON THE LOWER RADIUS OR THE FOOT.
5. TOLERANCE :  $\pm 0.010$ "[0.25mm] UNLESS OTHERWISE SPECIFIED.
6. OTHERWISE DIMENSION FOLLOW ACCEPTABLE SPEC.
7. REFERENCE DOCUMENT : JEDEC SPEC MS-016
8. BOTTOM E-PIN INDENT IN MARKED AS BELOW :

SYMBOLS	DIMENSIONS IN MILLIMETERS			DIMENSIONS IN INCHES		
	MIN	NOM	MAX	MIN	NOM	MAX
A	3.18	3.35	3.56	0.125	0.132	0.140
A1	1.93	2.35	2.41	0.076	0.090	0.095
A2	0.38	—	—	0.015	—	—
b	0.33	0.46	0.53	0.013	0.018	0.021
b1	0.66	0.71	0.82	0.026	0.028	0.032
D	12.32	12.44	12.57	0.485	0.490	0.495
D1	11.35	11.43	11.51	0.447	0.450	0.453
D2	10.41	10.67	10.92	0.410	0.420	0.430
D3	—	7.62	—	—	0.300	—
E	14.86	14.99	15.11	0.585	0.590	0.595
E1	13.89	13.97	14.05	0.547	0.550	0.553
E2	12.95	13.21	13.46	0.510	0.520	0.530
E3	—	10.16	—	—	0.400	—
Y	—	—	0.076	—	—	0.003
$\theta$	0°	—	6°	0°	—	6°

CUSTOMER :  
 APPROVED BY :  
 DATE :  
 DRAW BY :  
 CHECK BY :  
 APPROVAL :  
 APPROVAL :

LINGSEN 5-1 NAN 2ND ROAD T.E.P.Z  
 PRECISION IND., LTD TAICHUNG, TAIWAN R. O. C  
 TITLE:  
 32L PLASTIC LEADED CHIP  
 CARRIER PACKAGE OUTLINE  
 DRAWING  
 DWG. NO. PO-PLCC-004 REV. 0  
 UNIT : INCH SCALE : 6/1 SHEET 1 OF 1

