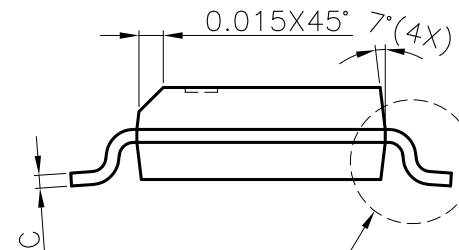
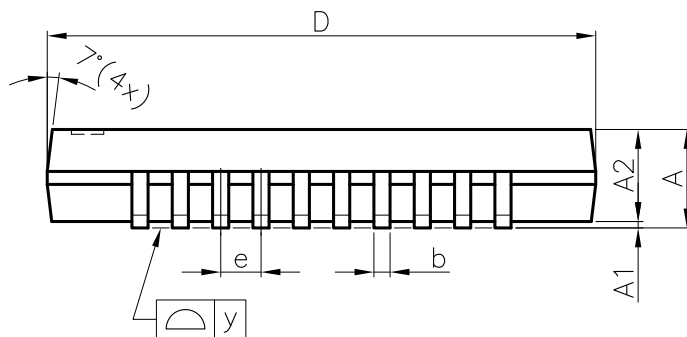


DETAIL A



DETAIL A

NOTE :

1. CONTROLLING DIMENSION : INCH
2. LEAD FRAME MATERIAL : COPPER 194
3. DIMENSION "D" DOES NOT INCLUDE MOLD FLASH, TIE BAR BURRS AND GATE BURRS. MOLD FLASH, TIE BAR BURRS AND GATE BURRS SHALL NOT EXCEED 0.006"[0.15mm] PER END DIMENSION "E1" DOES NOT INCLUDE INTERLEAD FLASH. INTERLEAD FLASH SHALL NOT EXCEED 0.010"[0.25mm] PER SIDE.
4. DIMENSION "b" DOES NOT INCLUDE DAMBAR PROTRUSION. ALLOWABLE DAMBAR PROTRUSION SHALL BE 0.003"[0.08mm] TOTAL IN EXCESS OF THE "b" DIMENSION AT MAXIMUM MATERIAL CONDITION. DAMBAR CANNOT BE LOCATED ON THE LOWER RADIUS OR THE FOOT. MINIMUM SPACE BETWEEN PROTRUSION AND AN ADJACENT LEAD TO BE 0.0028"[0.07mm]
5. TOLERANCE : ±0.010"[0.25mm] UNLESS OTHERWISE SPECIFIED.
6. OTHERWISE DIMENSION FOLLOW ACCEPTABLE SPEC.
7. REFERENCE DOCUMENT : JEDEC SPEC MO-137

| SYMBOLS | DIMENSIONS IN MILLIMETERS |      |       | DIMENSIONS IN INCHES |       |        |
|---------|---------------------------|------|-------|----------------------|-------|--------|
|         | MIN                       | NOM  | MAX   | MIN                  | NOM   | MAX    |
| A       | 1.47                      | 1.60 | 1.73  | 0.058                | 0.063 | 0.068  |
| A1      | 0.10                      | —    | 0.25  | 0.004                | —     | 0.010  |
| A2      | 1.37                      | 1.45 | 1.52  | 0.054                | 0.057 | 0.060  |
| b       | 0.23                      | 0.25 | 0.36  | 0.009                | 0.010 | 0.014  |
| C       | 0.19                      | 0.20 | 0.25  | 0.0075               | 0.008 | 0.0098 |
| D       | 8.53                      | 8.64 | 8.74  | 0.336                | 0.340 | 0.344  |
| E       | 5.79                      | 5.99 | 6.20  | 0.228                | 0.236 | 0.244  |
| E1      | 3.81                      | 3.91 | 3.99  | 0.150                | 0.154 | 0.157  |
| e       | —                         | 0.64 | —     | —                    | 0.025 | —      |
| L       | 0.38                      | 0.71 | 1.27  | 0.015                | 0.028 | 0.050  |
| y       | —                         | —    | 0.076 | —                    | —     | 0.003  |
| φ       | 0°                        | —    | 8°    | 0°                   | —     | 8°     |

|                                |                 |   |             |
|--------------------------------|-----------------|---|-------------|
| CUSTOMER :                     |                 | <b>LINGSEN</b> 5-1 NAN 2ND ROAD T.E.P.Z<br>PRECISION IND., LTD TAICHUNG, TAIWAN R. O. C |             |
| APPROVED BY                    | DATE            | TITLE:<br>20L NARROW BODY FINE PITCH<br>SHRINK SMALL OUTLINE<br>PACKAGE DRAWING         |             |
| DRAW BY:<br><i>Monica Chen</i> | <i>11/08/99</i> |   |             |
| CHECK BY:<br><i>Leo Chen</i>   | <i>12/01/99</i> | DWG. NO.  | PO-SSOP-001 |
| APPROVAL:<br><i>Paul Liu</i>   | <i>12/01/99</i> | REV.  | 0           |
| APPROVAL:<br><i>Jack Tu</i>    | <i>12/01/99</i> | UNIT :  | INCH        |
|                                |                 | SCALE :   | 12/1        |
|                                |                 | SHEET   | 1 OF 1      |