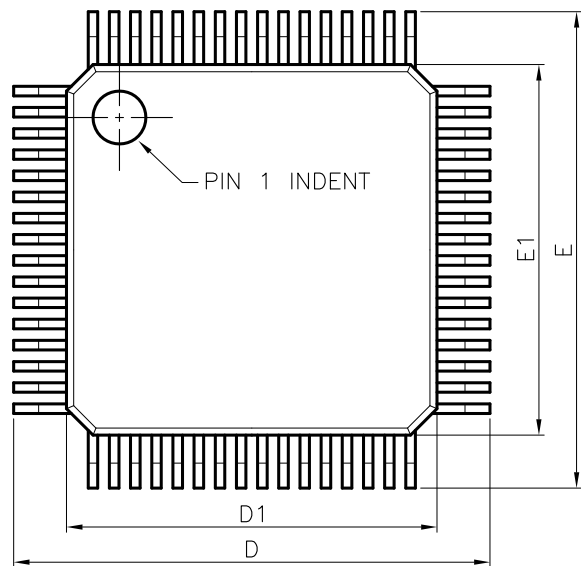
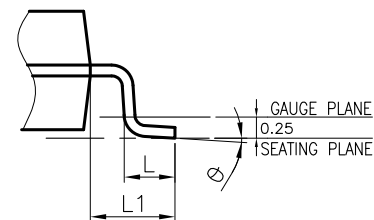
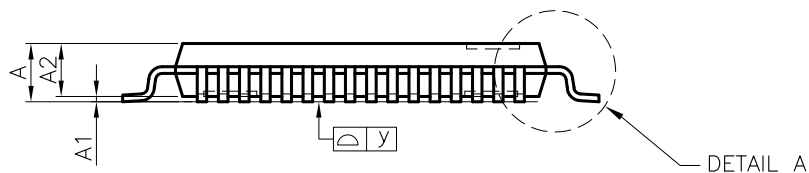
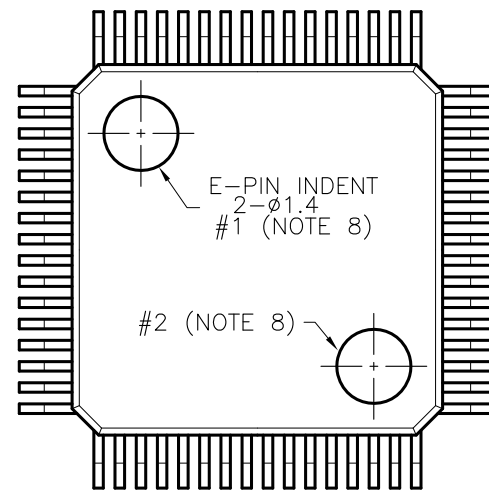
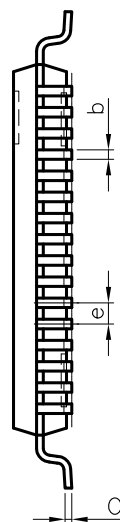


TOP VIEW



BOTTOM VIEW



DETAIL A

NOTE :

1. CONTROLLING DIMENSION : mm
2. LEAD FRAME MATERIAL : COPPER C7025
3. DIMENSION "D1" AND "E1" DO NOT INCLUDE MOLD PROTRUSIONS. ALLOWABLE PROTRUSION IS 0.25mm PER SIDE. "D1" AND "E1" ARE MAXIMUM PLASTIC BODY SIZE DIMENSIONS INCLUDING MOLD MISMATCH.
4. DIMENSION "b" DOES NOT INCLUDE DAMBAR PROTRUSION. ALLOWABLE DAMBAR PROTRUSION SHALL BE 0.003"[0.08mm] TOTAL IN EXCESS OF THE "b" DIMENSION AT MAXIMUM MATERIAL CONDITION. DAMBAR CANNOT BE LOCATED ON THE LOWER RADIUS OR THE FOOT. MINIMUM SPACE BETWEEN PROTRUSION AND AN ADJACENT LEAD TO BE 0.0028"[0.07mm]
5. TOLERANCE :  $\pm 0.010$ "[0.25mm] UNLESS OTHERWISE SPECIFIED.
6. OTHERWISE DIMENSION FOLLOW ACCEPTABLE SPEC.
7. REFERENCE DOCUMENT : JEDEC SPEC MS-026 ABD
8. BOTTOM E-PIN INDENT IN MARKED AS BELOW :



#1

#2

X : A, B, C,...

Y : 1 ~ 12

NO : DENOTE MOLD SET NUMBER

SYMBOL	DIMENSIONS IN MILLIMETERS		
	MIN.	NOM.	MAX.
A	—	—	1.20
A1	0.05	—	0.15
A2	0.95	1.00	1.05
b	0.13	0.18	0.23
C	0.12	—	0.20
E	8.70	9.00	9.30
E1	6.80	7.00	7.20
D	8.70	9.00	9.30
D1	6.80	7.00	7.20
e	—	0.40	—
L	0.45	0.60	0.75
L1	—	1.00	—
Ø	0°	3.5°	7°
y	0.00	—	0.08

CUSTOMER :

**LINGSEN** 5-1 NAN 2ND ROAD T.E.P.Z.  
PRECISION IND., LTD. TAICHUNG, TAIWAN, R. O. C.

APPROVED BY DATE

TITLE:  
64L TQFP PACKAGE OUTLINE  
DRAWING (7x7x1.0 mm)  
(2.0 mm FOOTPRINT)

DRAW BY: *Monica Chen* 06/12/00

CHECK BY: *Leo Chen* 06/12/00

APPROVAL: *Paul Liu* 06/12/00

APPROVAL: *Fack Tu* 6/12/00

DWG. NO. PO-TQFP-008 REV. 0

UNIT : mm SCALE : 10/1 SHEET 1 OF 1