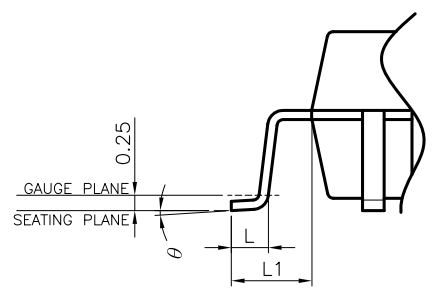
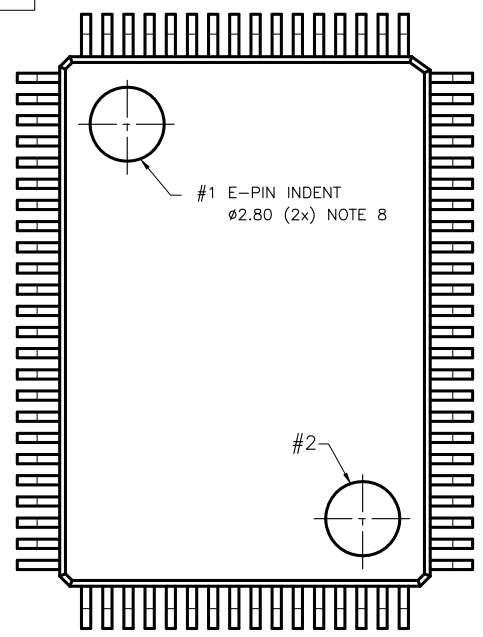
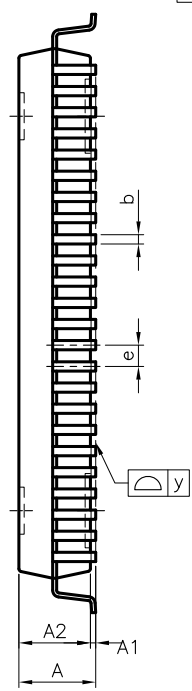
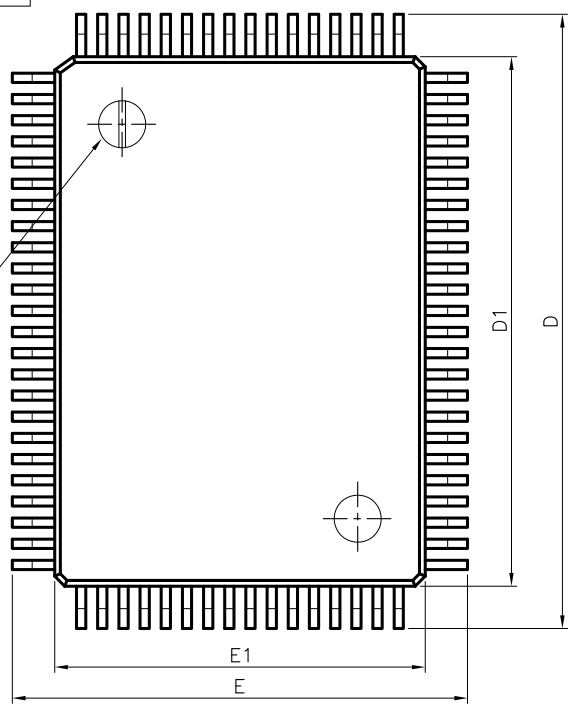


TOP VIEW

BOTTOM VIEW

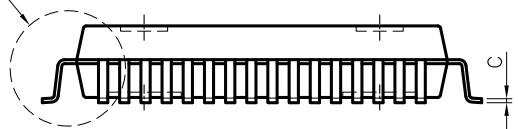
PIN 1 IDENTIFIER  $\phi 1.778(2x)$   
 DEPTH 0.05 - 0.15  
 SURFACE POLISHED

DETAIL A



NOTE :

1. CONTROLLING DIMENSION : mm
2. LEAD FRAME MATERIAL : COPPER C7025
3. DIMENSION "D" DOES NOT INCLUDE MOLD FLASH, TIE BAR BURRS AND GATE BURRS. MOLD FLASH, TIE BAR BURRS AND GATE BURRS SHALL NOT EXCEED 0.006"[0.15mm] PER END DIMENSION "E1" DOES NOT INCLUDE INTERLEAD FLASH. INTERLEAD FLASH SHALL NOT EXCEED 0.010"[0.25mm] PER SIDE.
4. DIMENSION "b" DOES NOT INCLUDE DAMBAR PROTRUSION. ALLOWABLE DAMBAR PROTRUSION SHALL BE 0.003"[0.08mm] TOTAL IN EXCESS OF THE "b" DIMENSION AT MAXIMUM MATERIAL CONDITION. DAMBAR CANNOT BE LOCATED ON THE LOWER RADIUS OR THE FOOT. MINIMUM SPACE BETWEEN PROTRUSION AND AN ADJACENT LEAD TO BE 0.0028"[0.07mm]
5. TOLERANCE :  $\pm 0.010$ "[0.25mm] UNLESS OTHERWISE SPECIFIED.
6. OTHERWISE DIMENSION FOLLOW ACCEPTABLE SPEC.
7. REFERENCE DOCUMENT : JEDEC SPEC MS-022
8. BOTTOM E-PIN INDENT IN MARKED AS BELOW :



SYMBOLS	DIMENSIONS IN MILLIMETERS		
	MIN	NOM	MAX
$\Delta$ A	2.75	3.05	3.40
A1	0.25	0.35	0.50
$\Delta$ A2	2.50	2.70	2.90
$\Delta$ b	0.29	—	0.45
$\Delta$ C	0.11	0.15	0.23
D	23.00	23.20	23.40
D1	19.90	20.00	20.10
E	17.00	17.20	17.40
E1	13.90	14.00	14.10
e	—	0.80	—
$\Delta$ L	0.73	0.88	1.03
L1	0.66	1.60	0.94
y	0.00	—	0.076
$\emptyset$	0°	—	7°

CUSTOMER :		LINGSEN 5-1 NAN 2ND ROAD T.E.P.Z PRECISION IND, LTD TAICHUNG, TAIWAN. R. O. C	
APPROVED BY	DATE	TITLE: 80L QFP PACKAGE OUTLINE DRAWING (14x20 mm) (FOOTPRINT : 3.2 mm)	
DRAW BY: <i>Kelly Ho</i>	10/19/06		
CHECK BY: <i>Jian Jong Lai</i>	10/19/06	DWG. NO.	PO-QFP-009
APPROVAL: <i>Parker Chen</i>	10/19/06	REV.	1
APPROVAL: <i>Andy Yang</i>	10/20/06	UNIT :	mm
		SCALE :	5/1
		SHEET	1 OF 1

TAIWAN No #1

X Y #2

X : A ~ M  
 Y : 1 ~ 6  
 NO : DENOTE MOLD SET NUMBER