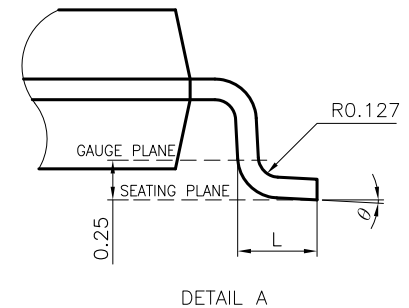
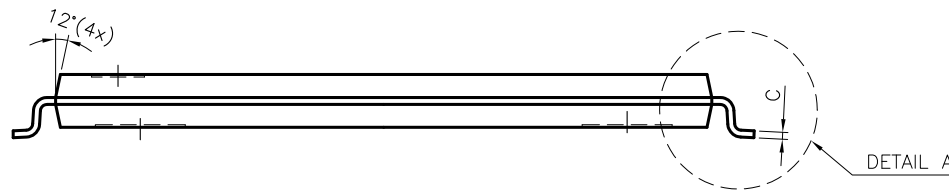


NOTE :

- CONTROLLING DIMENSION : mm
- LEAD FRAME MATERIAL : COPPER C7025
- DIMENSION "E" DOES NOT INCLUDE MOLD FLASH, TIE BAR BURRS AND GATE BURRS. MOLD FLASH, TIE BAR BURRS AND GATE BURRS SHALL NOT EXCEED 0.006"[0.15mm] PER END DIMENSION "D1" DOES NOT INCLUDE INTERLEAD FLASH. INTERLEAD FLASH SHALL NOT EXCEED 0.010"[0.25mm] PER SIDE.
- DIMENSION "b" DOES NOT INCLUDE DAMBAR PROTRUSION. ALLOWABLE DAMBAR PROTRUSION SHALL BE 0.003"[0.08mm] TOTAL IN EXCESS OF THE "b" DIMENSION AT MAXIMUM MATERIAL CONDITION. DAMBAR CANNOT BE LOCATED ON THE LOWER RADIUS OR THE FOOT. MINIMUM SPACE BETWEEN PROTRUSION AND AN ADJACENT LEAD TO BE 0.0028"[0.07mm]
- TOLERANCE :  $\pm 0.010$ "[0.25mm] UNLESS OTHERWISE SPECIFIED.
- OTHERWISE DIMENSION FOLLOW ACCEPTABLE SPEC.
- REFERENCE DOCUMENT : JEDEC SPEC MO-142 CA
- BOTTOM E-PIN INDENT IN MARKED AS BELOW :



SYMBOLS	DIMENSIONS IN MILLIMETERS			DIMENSIONS IN INCHES		
	MIN	NOM	MAX	MIN	NOM	MAX
A	—	—	1.20	—	—	0.047
A1	0.05	—	0.15	0.002	—	0.006
A2	0.95	1.00	1.05	0.037	0.039	0.041
b	0.17	0.22	0.27	0.0067	0.0087	0.0106
C	0.10	—	0.21	0.004	—	0.0083
E	9.90	10.00	10.10	0.390	0.394	0.398
D	13.80	14.00	14.20	0.543	0.551	0.559
D1	12.30	12.40	12.50	0.4843	0.4882	0.4921
e	—	0.50	—	—	0.0197	—
L	0.50	0.60	0.70	0.020	0.024	0.028
Ø	0°	—	5°	0°	—	5°
y	0.00	—	0.076	0.000	—	0.003

CUSTOMER :		<b>LINGSEN</b> 5-1 NAN 2ND ROAD T.E.P.Z PRECISION IND; LTD TAICHUNG, TAIWAN R. O. C	
APPROVED BY	DATE	TITLE:	
DRAW BY: <i>Sandy Sue</i>	08/13/04	40L TSOP TYPE I PACKAGE OUTLINE DRAWING (10x14 mm)	
CHECK BY: <i>Ryon Lin</i>	08/13/04	DWG. NO.	REV. 2
APPROVAL: <i>Parker Chen</i>	08/13/04	PO-TSOPI-006	
APPROVAL: <i>Andy Yang</i>	08/16/04	UNIT : mm	SCALE : 10/1 SHEET 1 OF 1



X : A ~ S  
Y : 1 ~ 8  
NO: DENOTES MOLD SET NUMBER