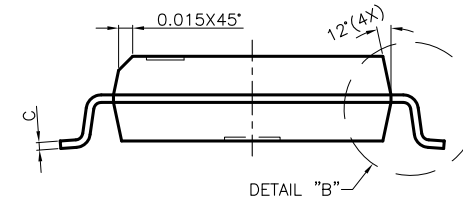
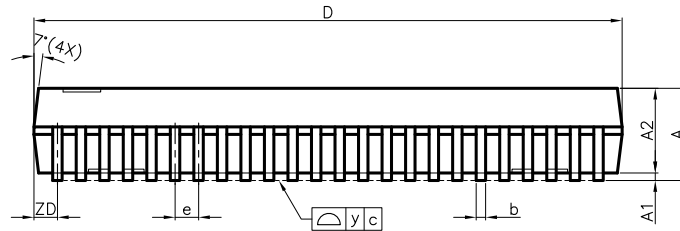


DETAIL "B"

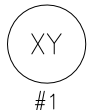


DETAIL "B"

NOTE :

- CONTROLLING DIMENSION : INCH
- LEAD FRAME MATERIAL : COPPER 194
- DIMENSION "D" DOES NOT INCLUDE MOLD FLASH, TIE BAR BURRS AND GATE BURRS. MOLD FLASH, TIE BAR BURRS AND GATE BURRS SHALL NOT EXCEED 0.006"[0.15mm] PER END DIMENSION "E1" DOES NOT INCLUDE INTERLEAD FLASH. INTERLEAD FLASH SHALL NOT EXCEED 0.010"[0.25mm] PER SIDE.
- DIMENSION "b" DOES NOT INCLUDE DAMBAR PROTRUSION. ALLOWABLE DAMBAR PROTRUSION SHALL BE 0.003"[0.08mm] TOTAL IN EXCESS OF THE "b" DIMENSION AT MAXIMUM MATERIAL CONDITION. DAMBAR CANNOT BE LOCATED ON THE LOWER RADIUS OR THE FOOT. MINIMUM SPACE BETWEEN PROTRUSION AND AN ADJACENT LEAD TO BE 0.0028"[0.07mm]
- TOLERANCE :  $\pm 0.010$ "[0.25mm] UNLESS OTHERWISE SPECIFIED.
- OTHERWISE DIMENSION FOLLOW ACCEPTABLE SPEC.
- REFERENCE DOCUMENT : JEDEC SPEC MO-118(AA)
- BOTTOM E-PIN INDENT IN MARKED AS BELOW :

SYMBOLS	DIMENSIONS IN MILLIMETERS			DIMENSIONS IN INCHES		
	MIN	NOM	MAX	MIN	NOM	MAX
A	2.41	2.59	2.79	0.095	0.102	0.110
A1	0.20	0.30	0.40	0.008	0.012	0.016
A2	2.21	2.29	2.39	0.087	0.090	0.094
b	0.20	0.25	0.30	0.008	0.010	0.012
C	0.19	0.20	0.25	0.0075	0.008	0.010
D	15.75	15.88	16.00	0.620	0.625	0.630
E	10.03	10.31	10.67	0.395	0.408	0.420
E1	7.39	7.49	7.59	0.291	0.295	0.299
e	—	0.64	—	—	0.025	—
L	0.51	0.76	1.02	0.020	0.030	0.040
ZD	—	0.635	—	—	0.025	—
$\phi$	0°	—	8°	0°	—	8°
y	0.00	—	0.076	0.000	—	0.003



X : A ~ M  
Y : 1 ~ 14  
NO: DENOTE MOLD SET NUMBER

CUSTOMER :		<b>LINGSEN</b> 5-1 NAN 2ND ROAD T.E.P.Z PRECISION IND., LTD TAICHUNG, TAIWAN R. O. C		
APPROVED BY	DATE	TITLE: 48L SSOP PACKAGE OUTLINE DRAWING (300mil)		
DRAW BY: <i>Monica Chen</i>	11/09/99			
CHECK BY: <i>Leo Chen</i>	11/10/99	DWG. NO. PO-SSOP-012		
APPROVAL: <i>Paul Liu</i>	11/10/99			REV. 0
APPROVAL: <i>Jack Tu</i>	11/11/99	UNIT : INCH	SCALE : 7/1	SHEET 1 OF 1